



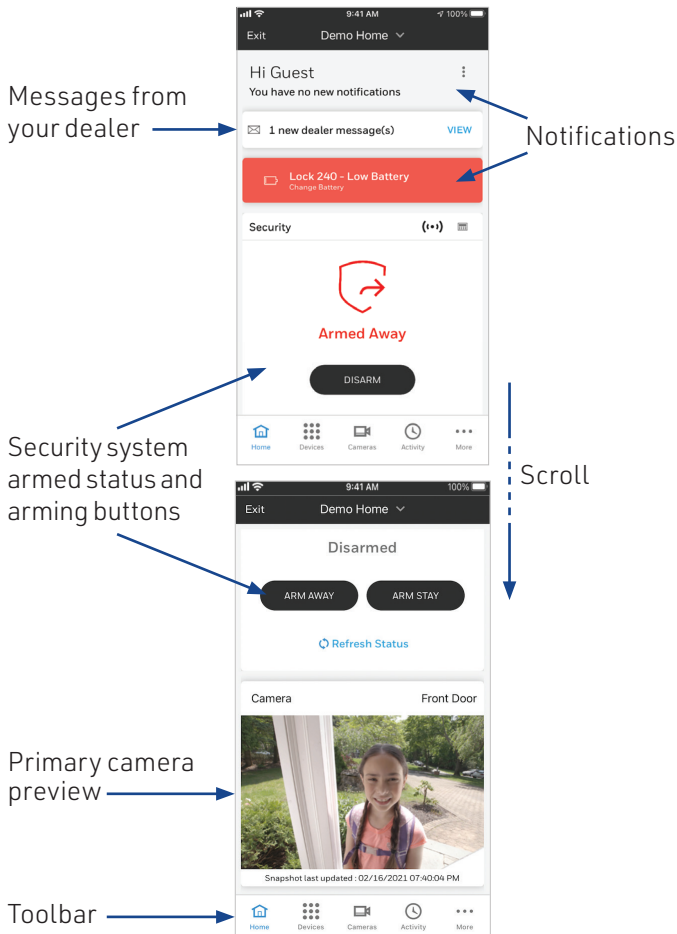
RESIDEO TOTAL CONNECT 2.0 REFERENCE GUIDE

Getting Started

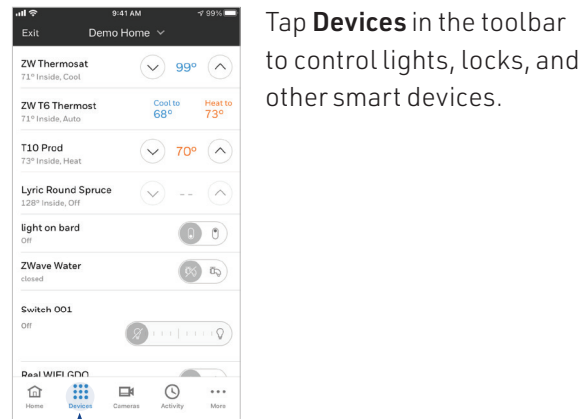
Download the Total Connect 2.0 app. Sign in using the username that your security professional created for you or check your email to create a password.



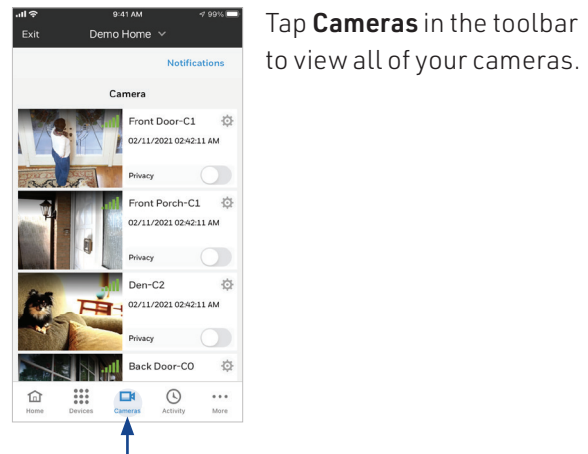
Overview of Your App



Accessing Smart Devices



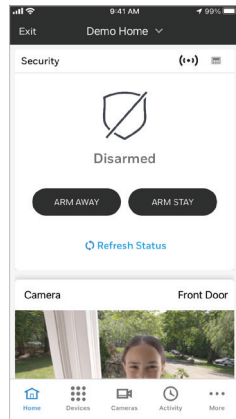
Accessing Cameras



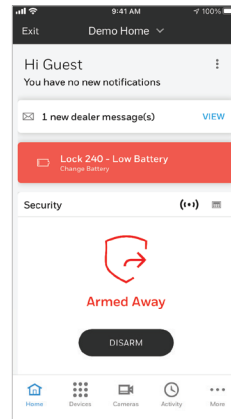
RESIDEO TOTAL CONNECT 2.0 REFERENCE GUIDE

Arming and Disarming

On the security tile, tap **Arm Away** or **Arm Stay** to set the system to armed.

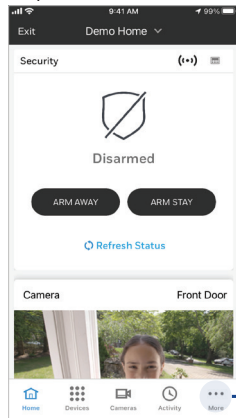


If your system is armed, tap **Disarm** to disarm the system.

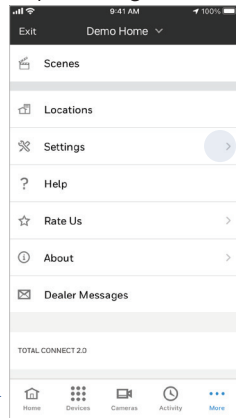


Add and Manage Users

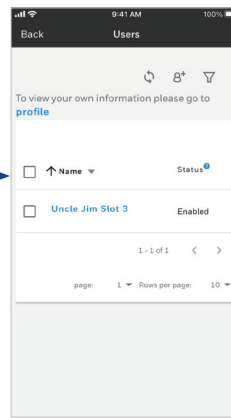
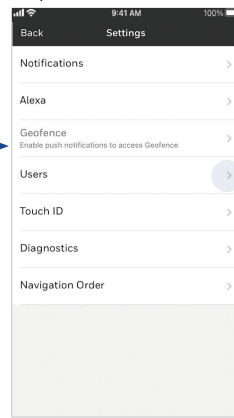
Tap **More**



Tap **Settings**

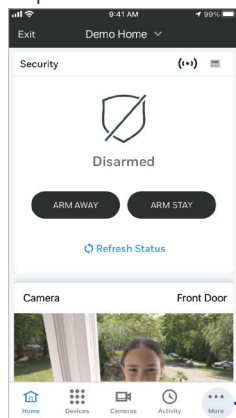


Tap **Users**

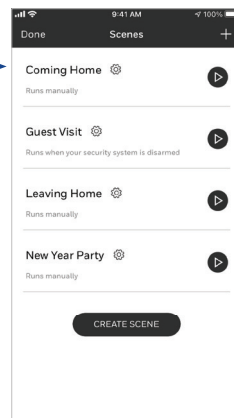
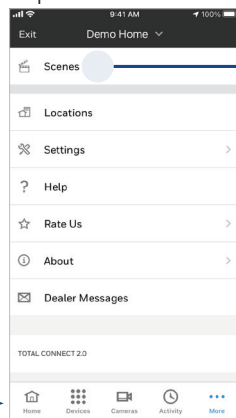


How to Use Scenes

Tap **More**



Tap **Scenes**



Scenes can be used to create automated actions for your security system and smart devices.

If you have any questions, please visit the help section of the app to see our FAQs.

FIRST ALERT PRO

Resideo Premier Partner